

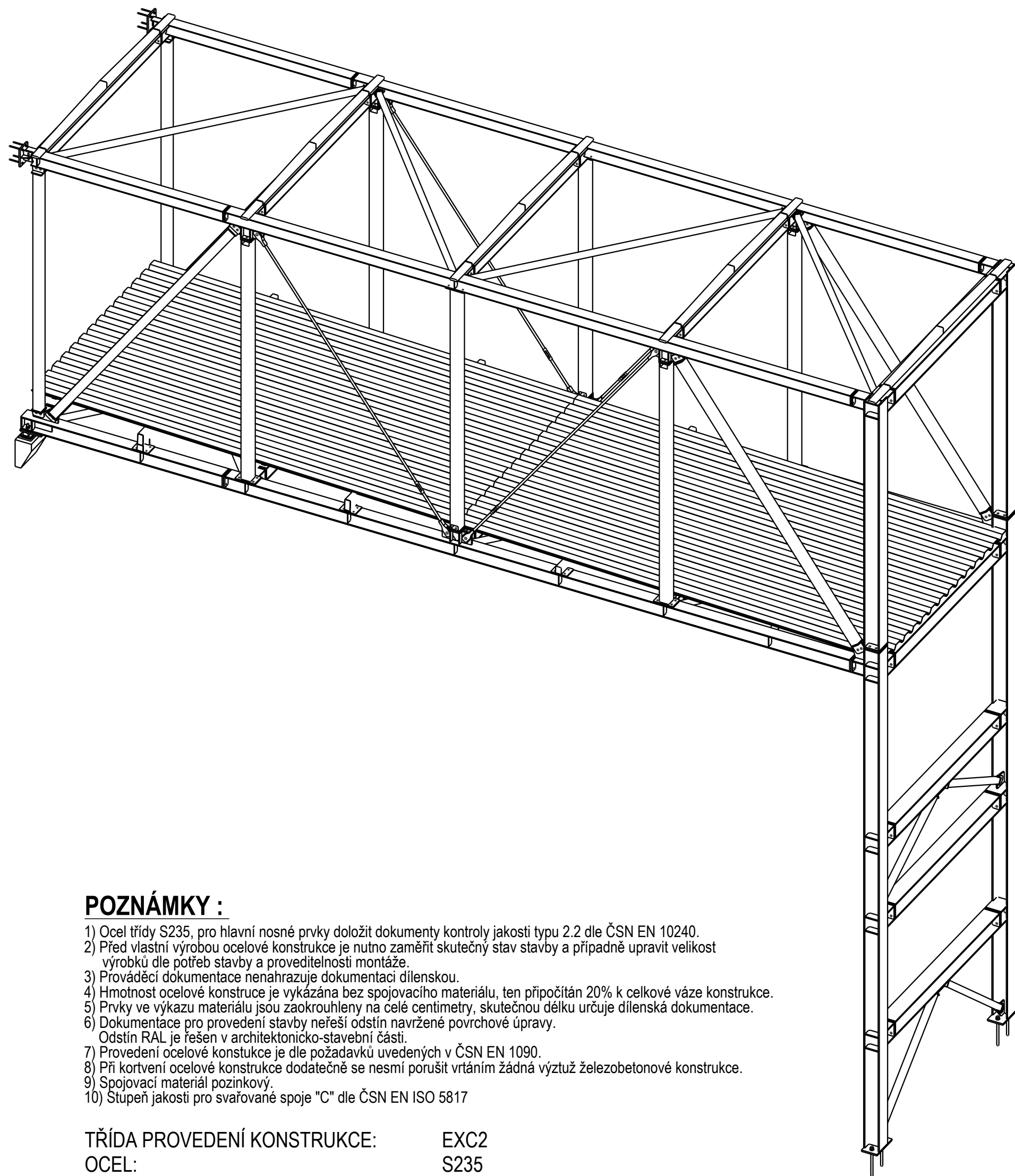
VÝKAZ KONSTRUKČNÍ OCELI

Počet	Profil	Délka		Třída oceli	Norma	Hmotnost	
		ks [m]	celkem [m]			hmotnost [kg]	celkem [kg]
2	HEA160	0.17	0.35	S355		30.40	10.60
7	HEA160	0.28	1.97	S355		30.40	59.90
3	HEA160	2.77	8.30	S355		30.40	252.86
2	HEA160	2.82	5.65	S355		30.40	171.98
1	HEA160	2.99	2.99	S355		30.40	91.17
2	HEA160	8.82	17.64	S355		30.40	537.02
2	HEB180	0.17	0.34	S235		51.20	17.43
2	HEB180	0.26	0.53	S235		51.20	27.04
5	HEB180	0.28	1.55	S235		51.20	84.81
4	HEB180	2.75	11.04	S235		51.20	365.92
2	HEB180	2.84	5.68	S235		51.20	291.16
2	HEB180	8.81	17.62	S235		51.20	903.21
10	HEB220	0.28	2.75	S235		71.50	196.62
2	HEB220	2.75	5.50	S235		71.50	385.80
2	HEB220	3.67	7.33	S235		71.50	523.76
2	HEB220	7.45	14.89	S235		71.50	1063.74
2	P120*120*7.1	3.54	7.07	S355		25.17	178.00
2	P120*120*7.1	4.24	8.49	S355		25.17	213.57
2	P120*120*7.1	4.34	8.68	S355		25.17	218.62
2	PL10*96	0.20	0.40	S235		0.00	2.07
1	PL10*96	2.79	2.79	S235		0.00	14.45
1	PL10*130	0.20	0.20	S235		0.00	2.08
2	PL10*130	0.22	0.44	S235		0.00	4.49
1	PL10*130	0.22	0.22	S235		0.00	2.29
1	PL10*130	2.79	2.79	S235		0.00	28.47
1	PL10*130	2.81	2.81	S235		0.00	28.68
2	PL10*139	0.20	0.40	S235		0.00	4.38
1	PL10*139	2.79	2.79	S235		0.00	30.44
2	PL25*160	0.41	0.82	S235		0.00	24.39
4	PL25*160	0.48	1.92	S235		0.00	52.48
1	PL220*50	0.07	0.07	S235		0.00	5.22
1	PL220*50	0.07	0.07	S355		0.00	5.22
2	RHS10*4	1.81	3.75	S355		8.29	31.07
1	RHS10*4	1.93	1.93	S355		8.29	15.99
1	RHS10*4	1.93	1.93	S355		8.29	16.03
1	RHS10*4	1.96	1.96	S355		8.29	16.21
1	RHS10*4	1.96	1.96	S355		8.29	16.26
1	RHS10*4	4.13	4.13	S355		8.29	34.22
1	RHS10*4	4.19	4.19	S355		8.27	34.63
2	RHS10*4	4.19	8.37	S355		8.29	69.42
2	RHS10*4	4.19	8.38	S355		8.29	69.49
1	RHS10*4	4.20	4.20	S355		8.29	34.78
1	RHS80*3.6	1.56	1.56	S355		8.59	13.33
1	RHS80*3.6	1.56	1.56	S355		8.59	13.37
1	RHS80*3.6	1.87	1.87	S355		8.59	15.88
1	RHS80*3.6	1.87	1.87	S355		8.59	16.03
2	RHS140*140*6.3	3.57	7.14	S355		26.30	187.77
4	RHS140*140*6.3	3.57	14.28	S355		26.30	375.58
1	RHS150*100*4	0.19	0.19	S235		4.97	0.94
9	RHS150*100*4	0.40	3.59	S235		5.19	18.62
9	RHS150*100*4	1.40	12.62	S235		7.08	89.33
1	RHS150*100*4	1.61	1.61	S235		6.86	11.05
2	RHS160*80*6	0.21	0.43	S355		21.48	9.15
2	RHS160*80*6	0.22	0.45	S355		21.48	9.58
2	RHS160*80*6	2.77	5.54	S355		21.48	118.99
1	RHS160*80*6	2.19	2.19	S355		21.41	68.39
2	RHS160*80*6	3.57	7.15	S355		21.48	153.62
1	RHS160*80*6	3.58	3.58	S355		20.61	73.80
Hmotnost konstrukční oceli						8111.28 kg	
Konstrukční plech, svazky a spojovací materiál						20 %	
Celková hmotnost oceli						9733.53 kg	

HILTY-HAS-U - 8.8-M27-340 4ks
 HILTY-HAS-U - 8.8-M12-200 8ks
 HILTY HIT-HY 200-A 12ks
 4x SYSTEMOVÉ TAHOLO - Dmin 32mm Materiál min. S355, opatřené napínákem - délka cca 150mm

VÝKAZ TRAPÉZOVÉHO PLECHU

Počet	Profil	Plocha		Délka [m]
		ks [m²]	celkem [m²]	
1	TR60/235-0.88 435 x 6036 mm	2.626	2.626	6.037
1	TR60/235-0.88 435 x 6116 mm	2.661	2.661	6.117
3	TR60/235-0.88 987 x 6036 mm	5.961	17.883	6.037
3	TR60/235-0.88 987 x 6116 mm	6.040	18.120	6.117
Celková plocha			41.296 m2	



0,000 = 100,00 mm m. švý. SOUHRNNÝ VÝKRES BETA 4

Jihomoravský kraj
 Žerotínovo nám. 601 82 Brno

PRÍSTAVBA K BUDOVĚ "A"
 SŠ BRNO, CHARBULOVA, p.o.
 Chrabatova 106, 60218 Brno

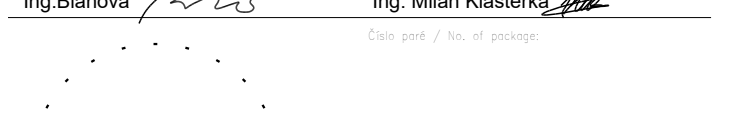
TENTO DOKUMENT JE VLASTNÍKEM INVESTORA, JEHO DALŠÍ KOPÍROVÁNÍ
 A NEBO ROZŠÍŘOVÁNÍ JE ZAKÁZÁNO BEZ PŘÍMÉHO SOUHLASU INVESTORA
 THIS DOCUMENT IS INVESTOR'S PROPERTY, ITS FUTURE COPYING AND/OR
 DISTRIBUTION IS FORBIDDEN WITHOUT INVESTOR'S WRITTEN APPROVAL

DOKUMENTACE PRO PROVEDENÍ STAVBY

D.1.2 STAVEBNÍ KONSTRUKČNÍ ŘEŠENÍ



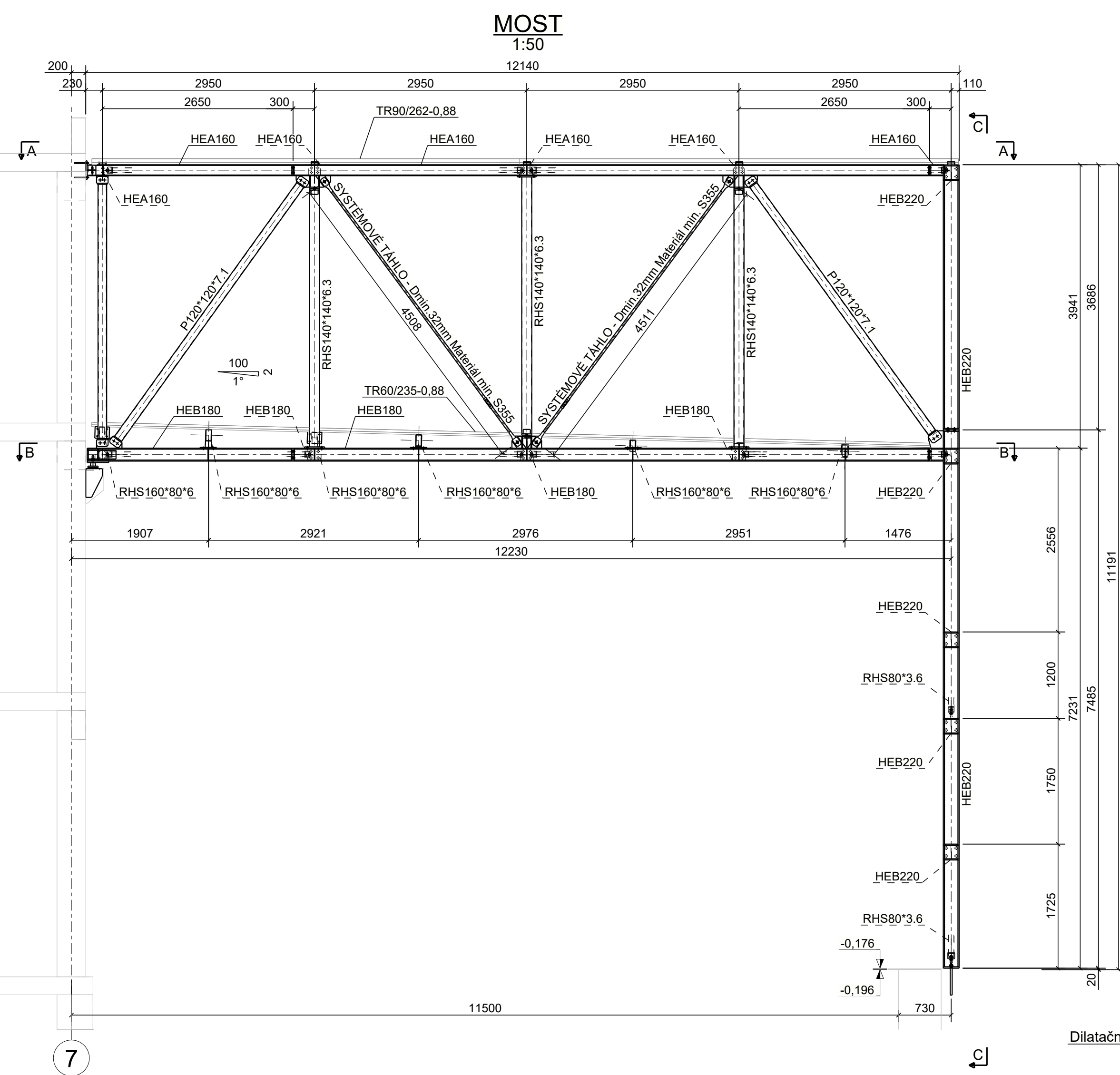
ING ARCH, LIBOR HABANEC 1:10 1:50
 Ing. Miroslav Šmída Ph.D. 1109/041
 Ing. Břetislav 23/01
 Ing. Milan Klášterák



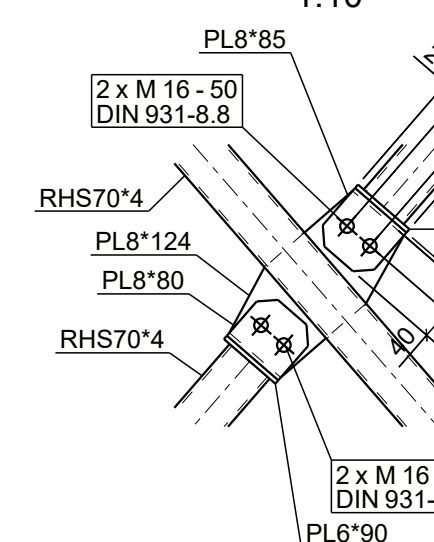
DOKONČOVÁNÍ OCELOVÝCH PRVKŮ
 (Příloha k výkazu - Součástí a doplnění pro ochranu proti korzi oceli v konstrukci - Část 1: Všeobecné zásady navrhování a odolnosti proti korzi)

ZKOVÁNÍ Zrnočet 80 wt
 CELKOVÁ TLOUŠŤKA ZINKU MIN. 100 µm
 OCHRANA PROTI KORZI NA ÚROVNI - C3

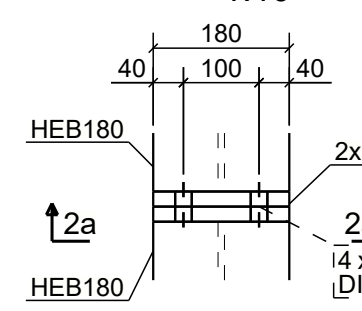
1219 - DPS - D.1.2 - 889 - 001 - 00



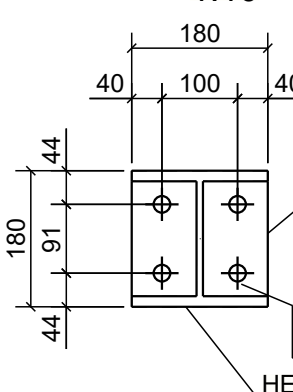
DETAIL 1



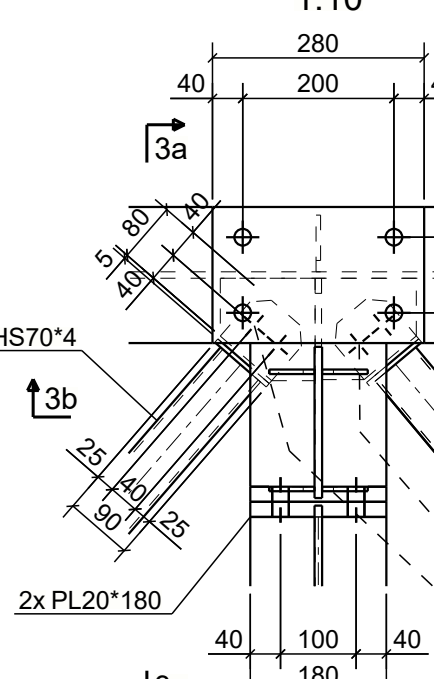
DETAIL 2



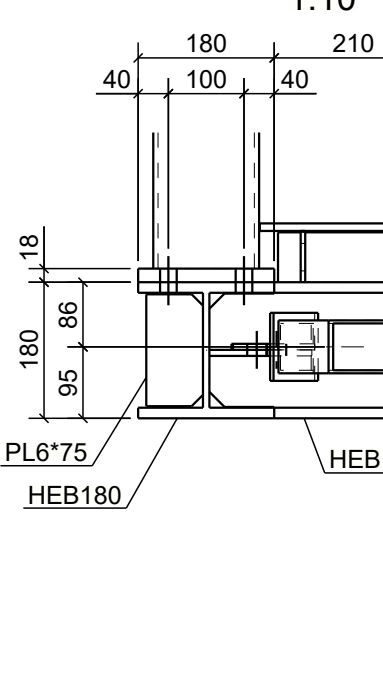
2a-2a



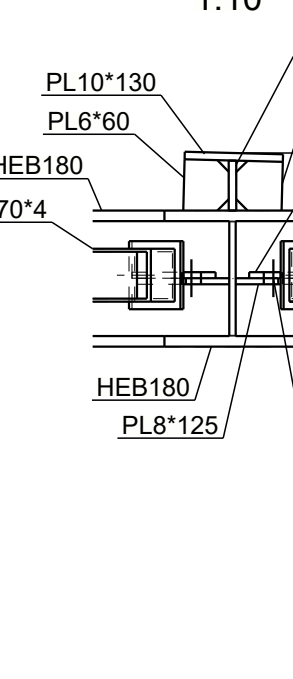
DETAIL 3



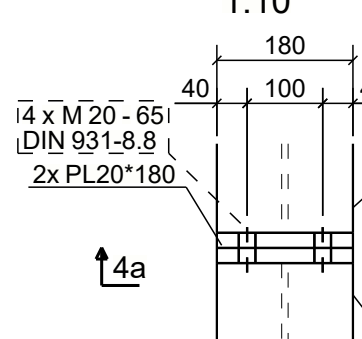
3a-3a



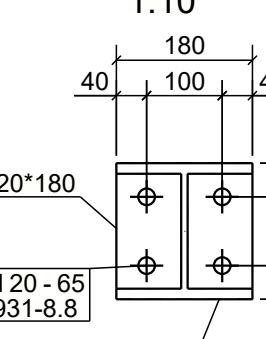
3b-3b



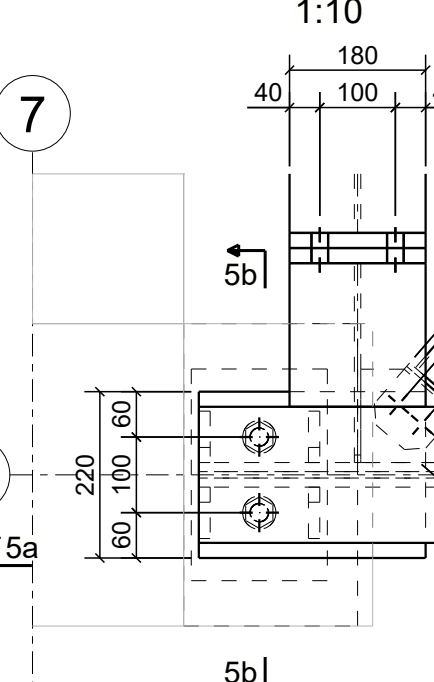
DETAIL 4



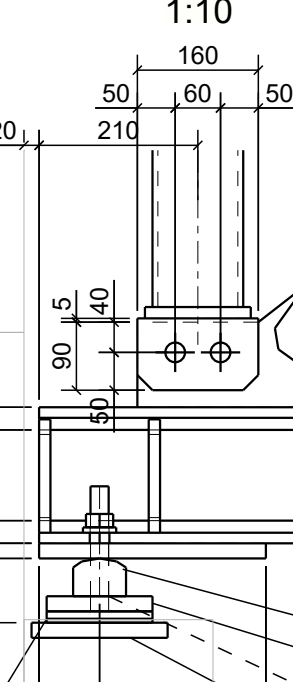
4a-4a



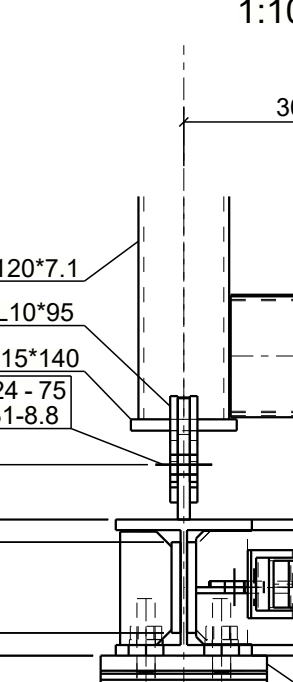
DETAIL 5



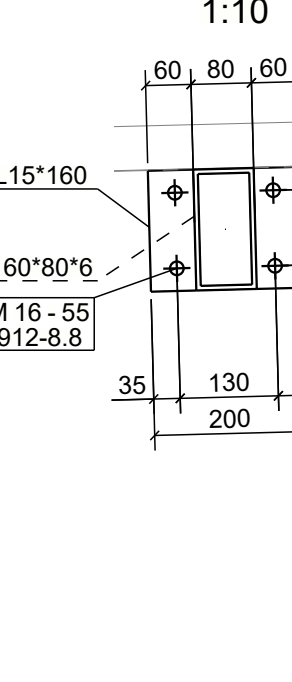
5a-5a



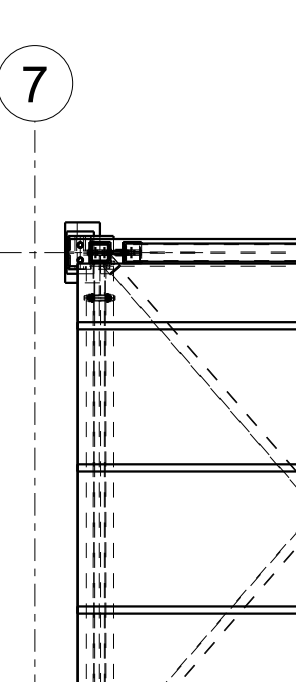
5b-5b



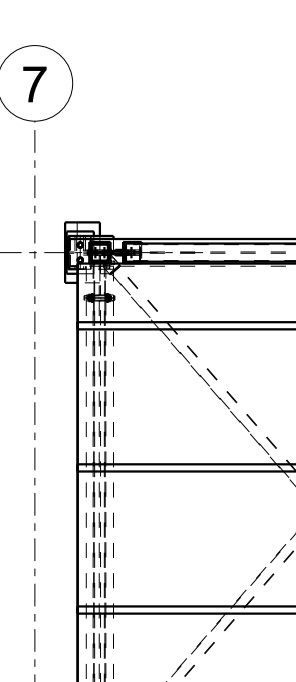
5c-5c



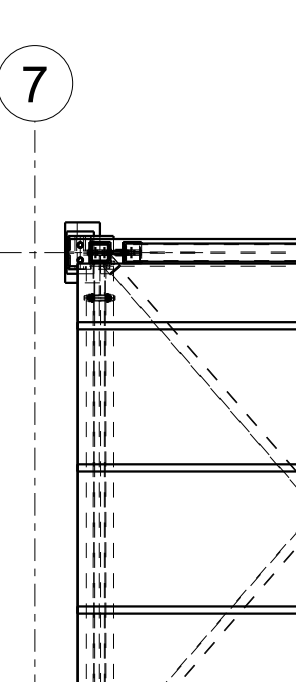
5d-5d



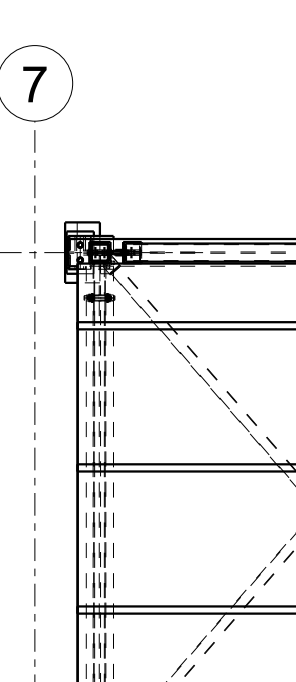
5e-5e



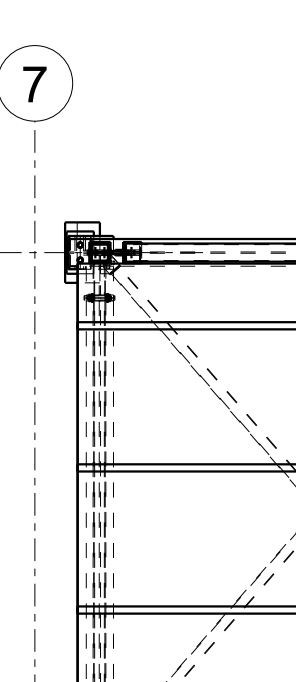
5f-5f



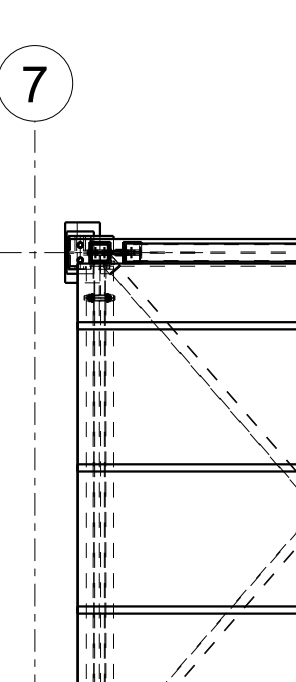
5g-5g



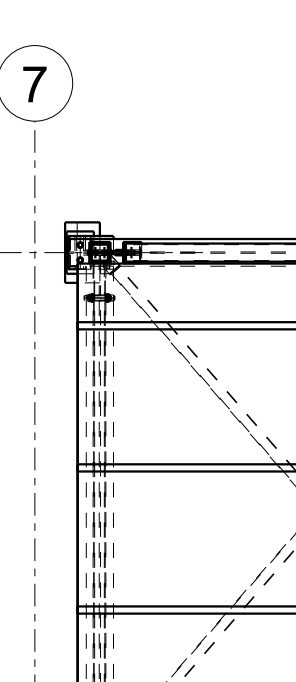
5h-5h



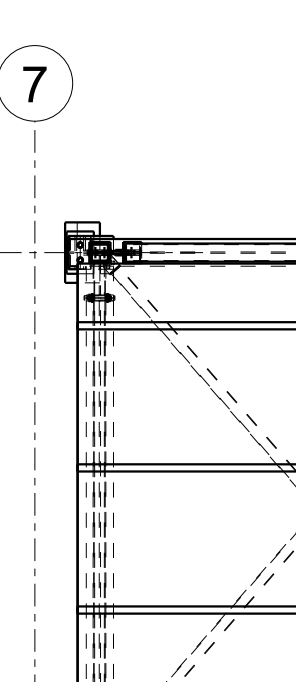
5i-5i



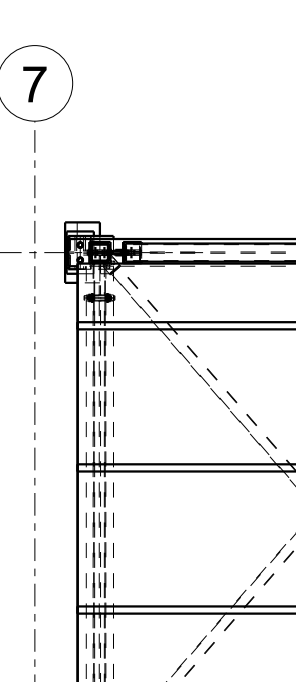
5j-5j



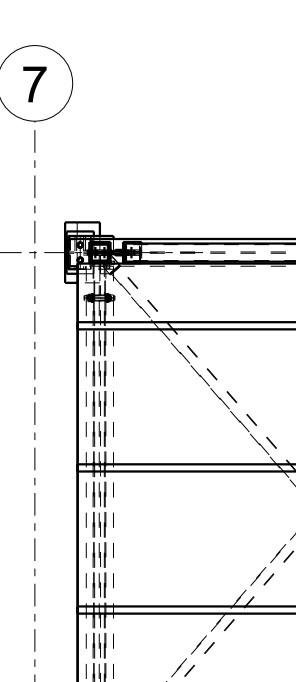
5k-5k



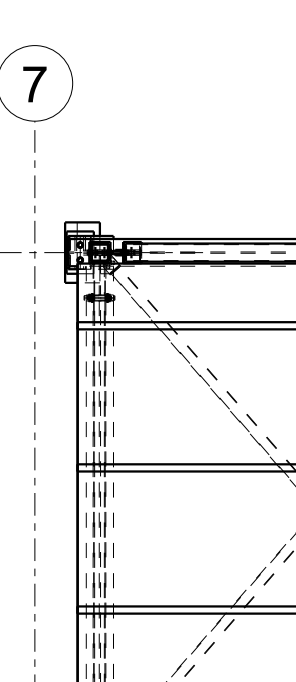
5l-5l



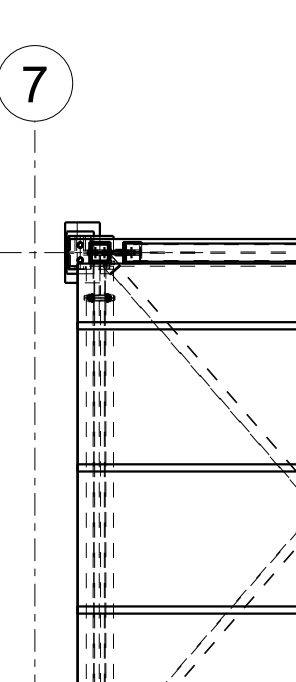
5m-5m



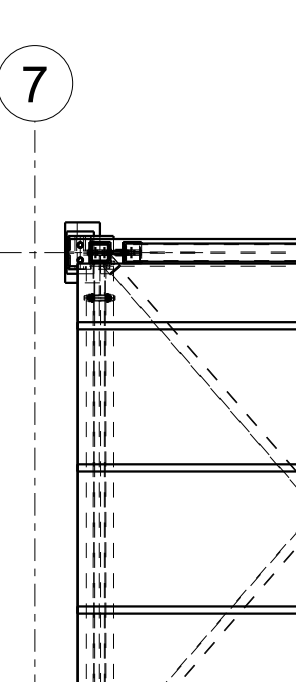
5n-5n



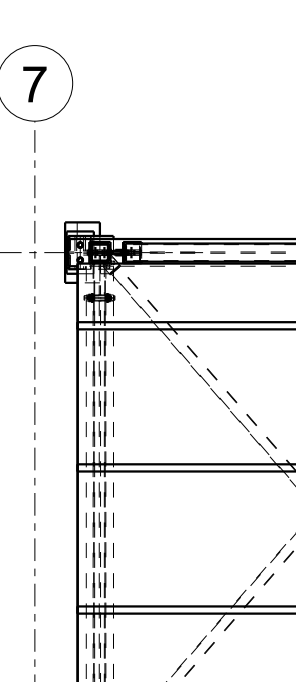
5o-5o



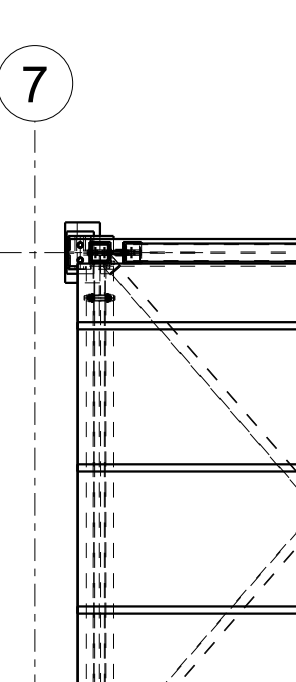
5p-5p



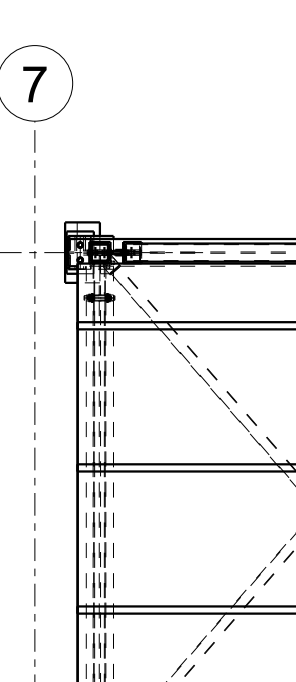
5q-5q



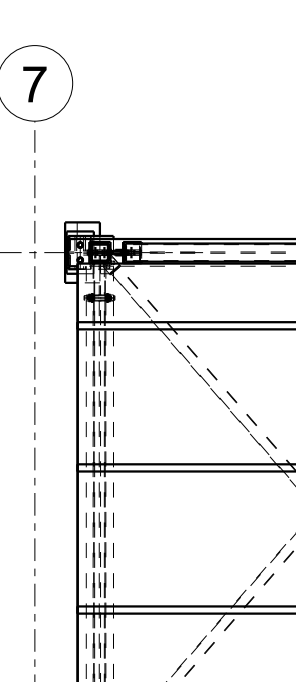
5r-5r



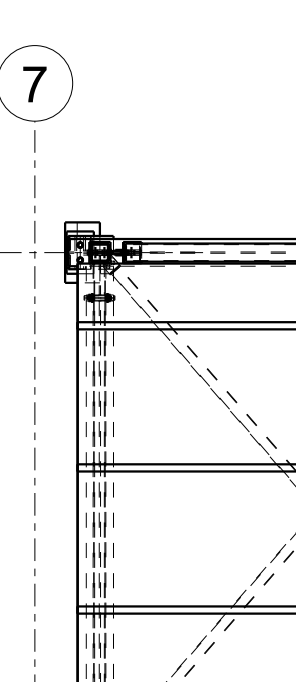
5s-5s



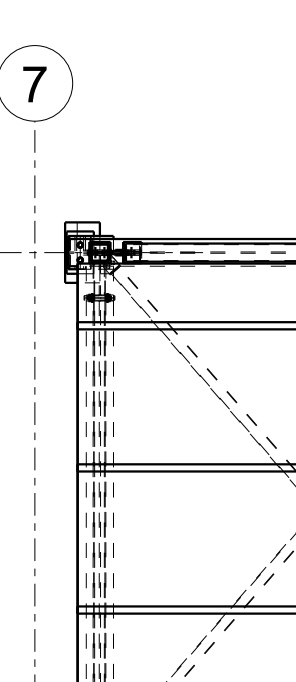
5t-5t



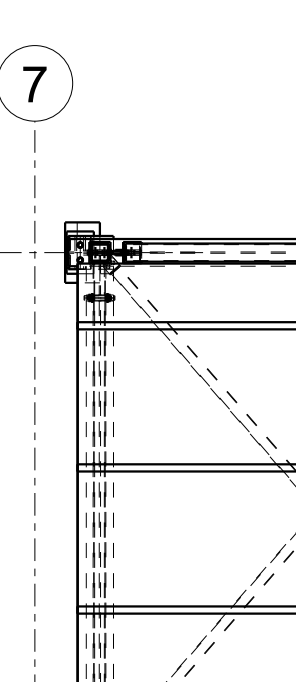
5u-5u



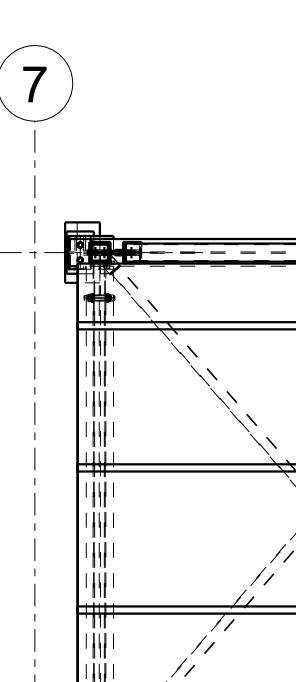
5v-5v



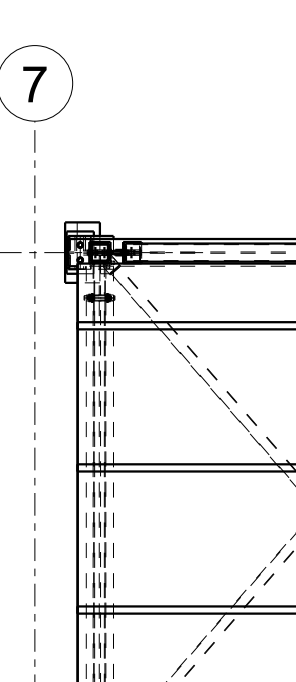
5w-5w



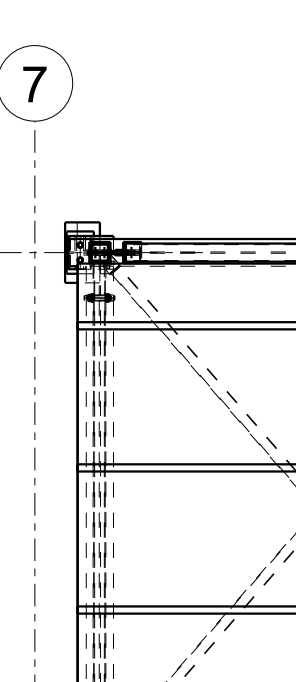
5x-5x



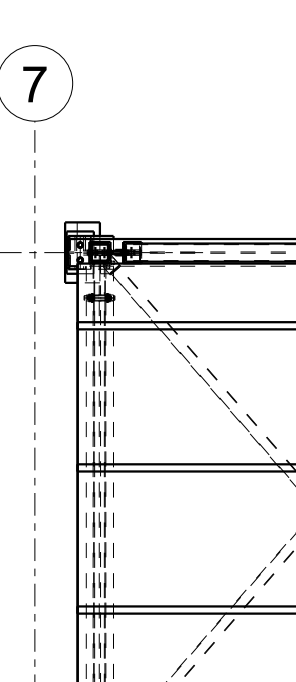
5y-5y



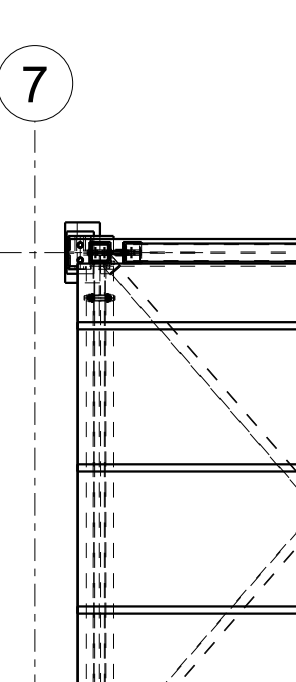
5z-5z



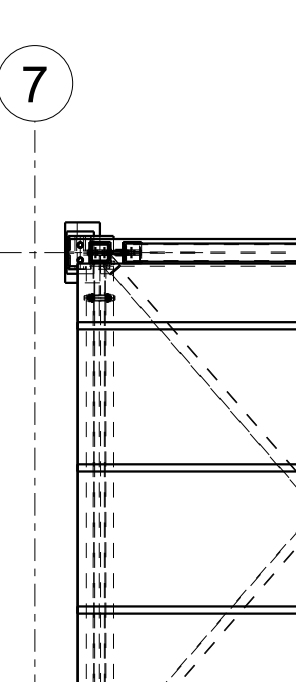
5aa-5aa



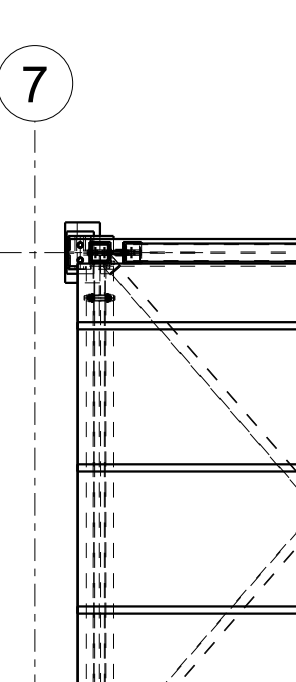
5ab-5ab



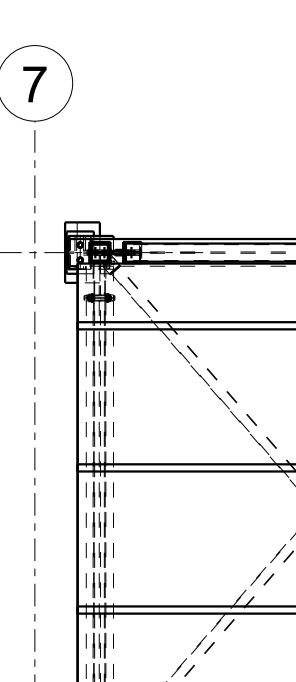
5ac-5ac



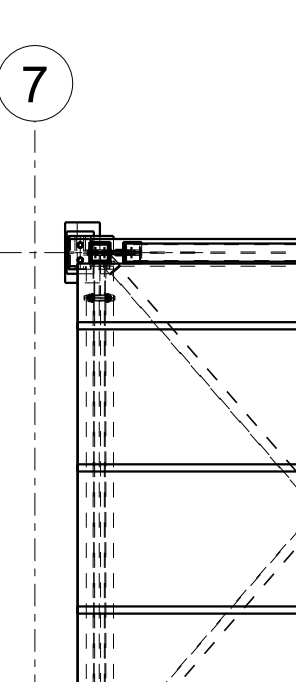
5ad-5ad



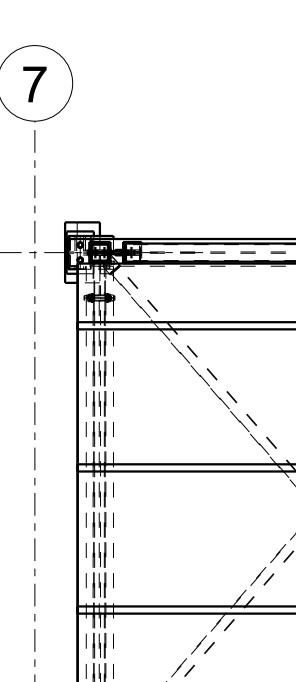
5ae-5ae



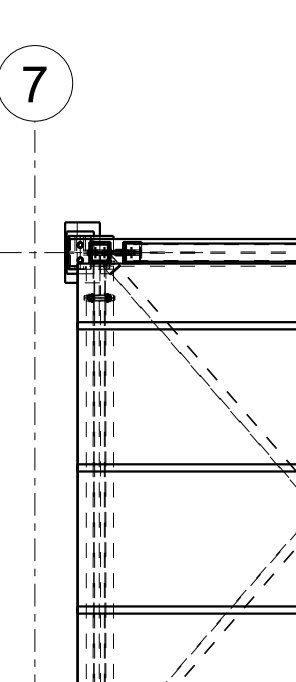
5af-5af



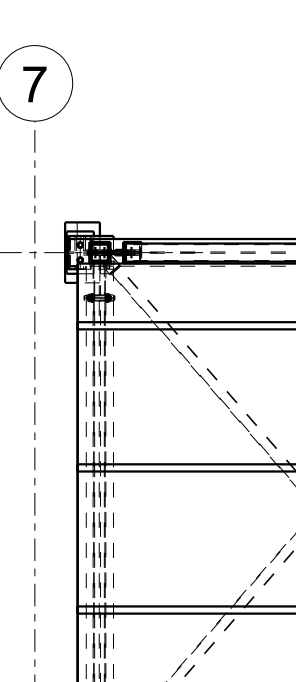
5ag-5ag



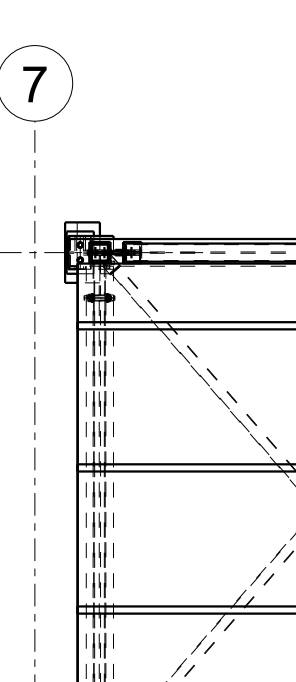
5ah-5ah



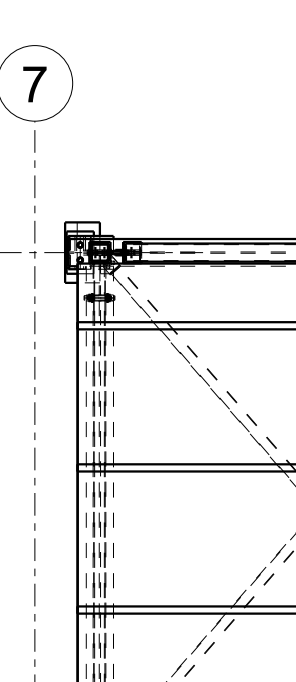
5ai-5ai



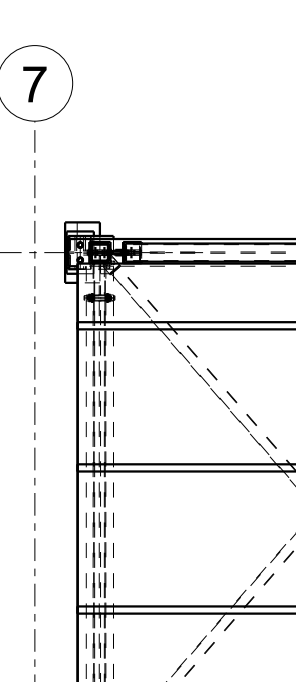
5aj-5aj



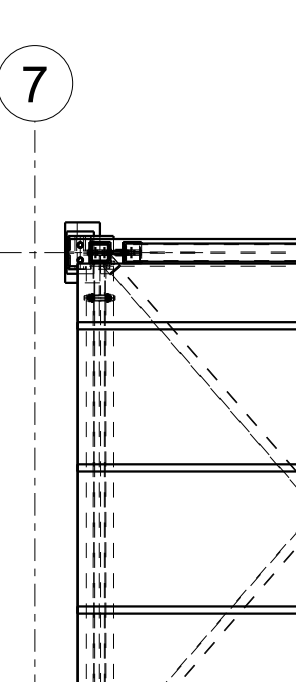
5ak-5ak



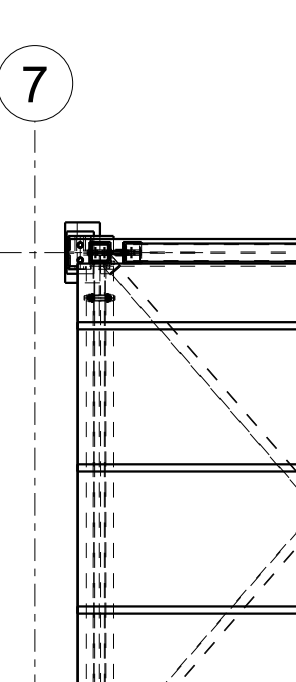
5al-5al



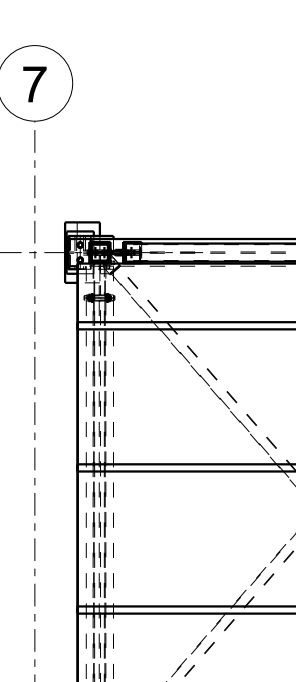
5am-5am



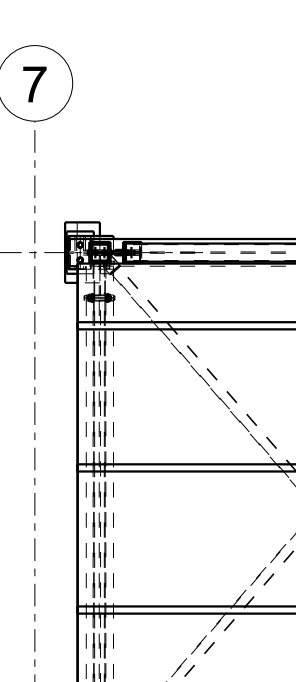
5an-5an



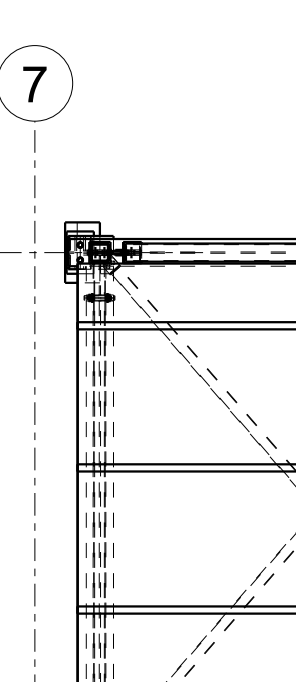
5ao-5ao



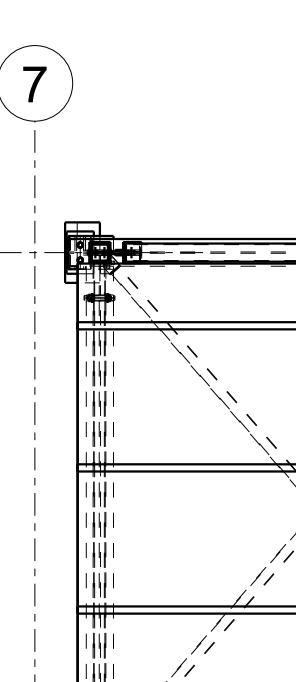
5ap-5ap



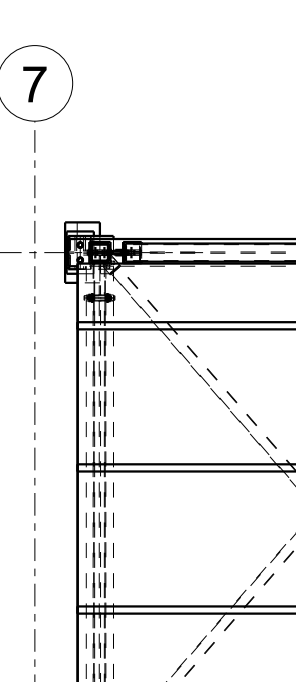
5aq-5aq



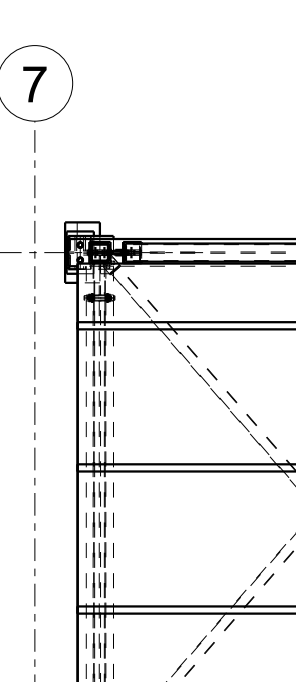
5ar-5ar



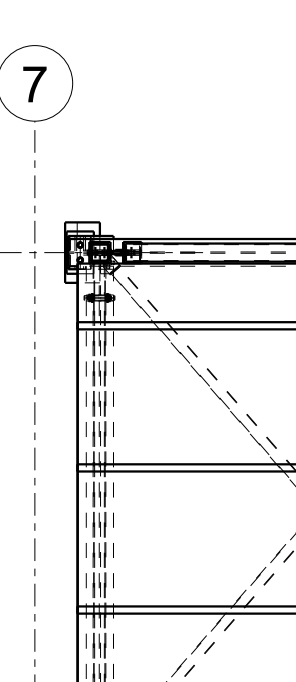
5as-5as



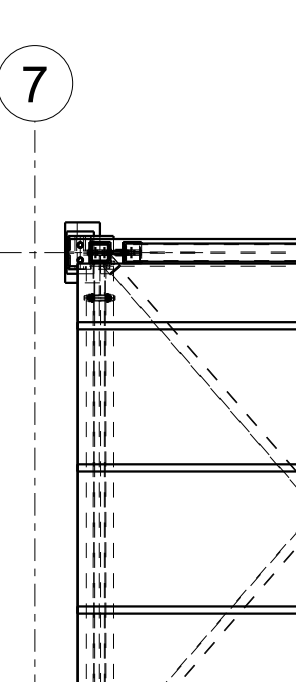
5at-5at



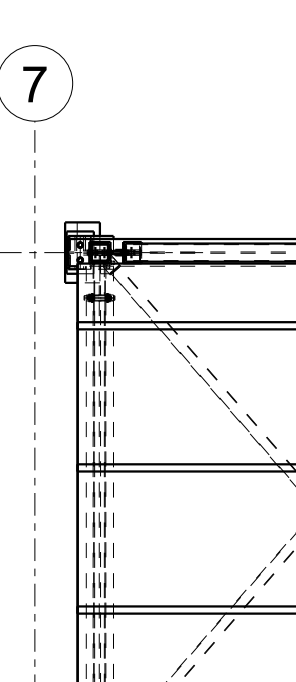
5au-5au



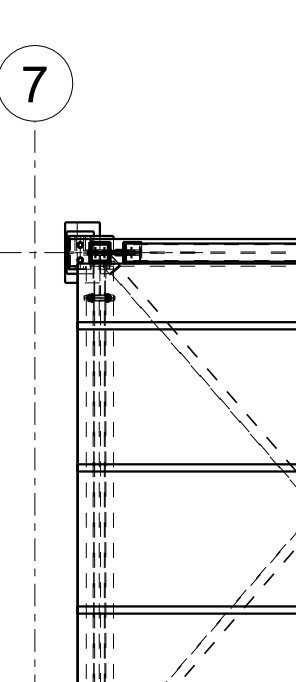
5av-5av



5aw-5aw



5ax-5ax



5ay-5ay